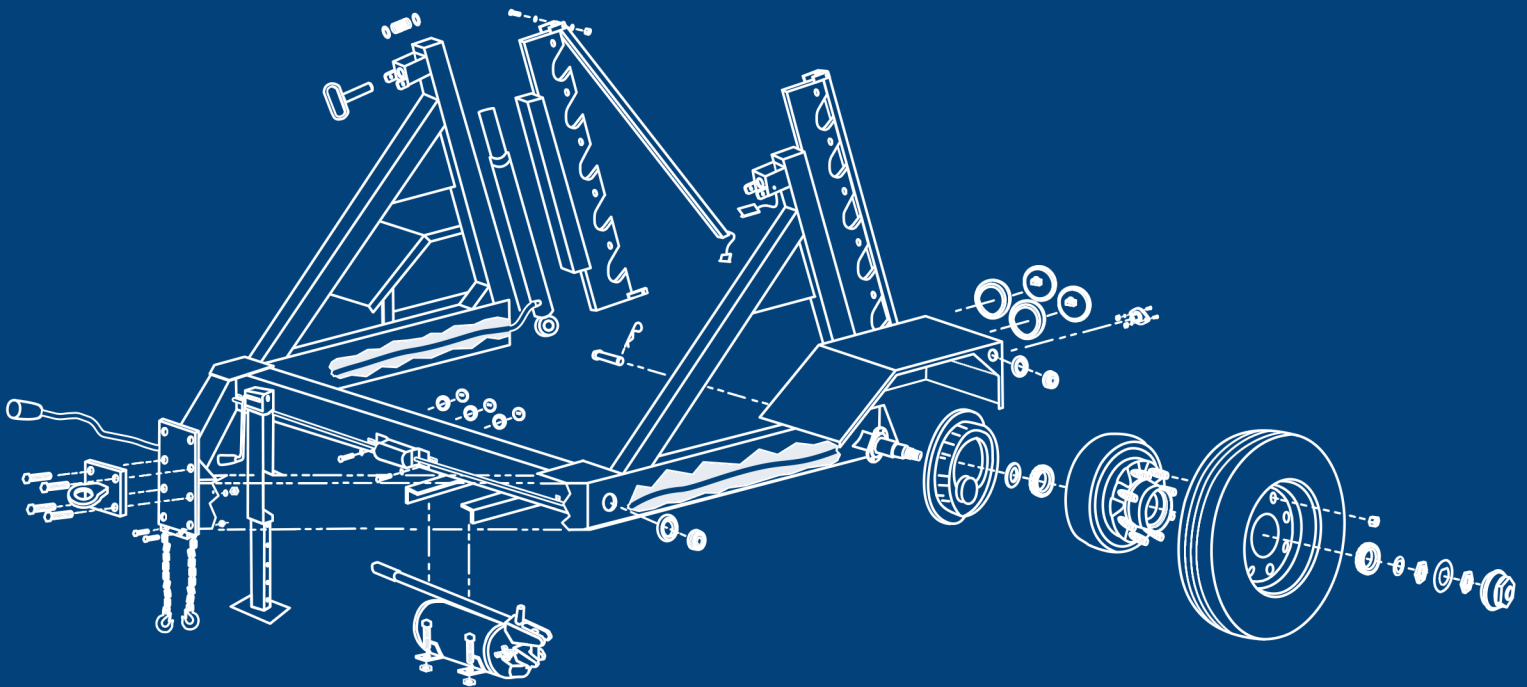


Cable Reel Trailer & Hydraulic Rewind

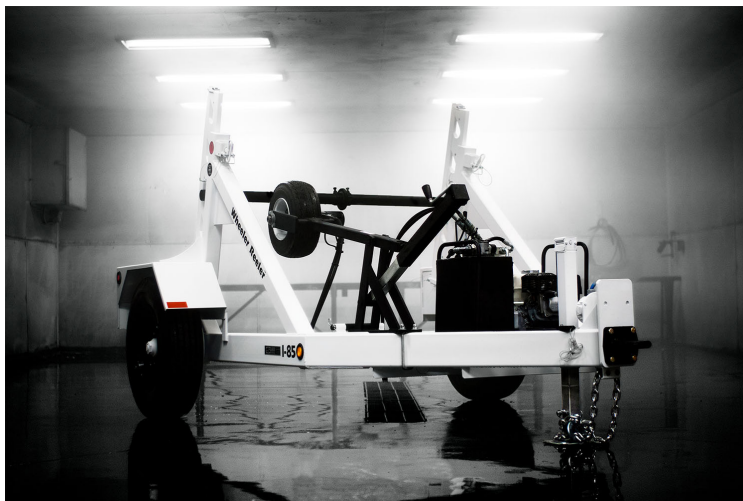
Operation & Service Manual



Wheeler Reeler



Model I-85



**Model I-85 with Power Pack & Hydraulic Power
Rewind accessory**

TO INSURE EFFICIENT AND PROMPT SERVICE, PLEASE FURNISH THE MODEL AND SERIAL NUMBERS IN
ALL CORRESPONDENCE OR CONTACTS.

MODEL _____
SERIAL NO. _____



Wheeler Reeler

Wheeler Reeler specifications

Model Number	45 / E-45	I-60 / E-60	I-85 / E-85
Payload Rating (max.)	4,500lb	6,000lb	8,500lb
Reel Diameter (max.)	96in	120in	120in
Reel Width (max.)	54in	60in	60in
Trailer Length	112in	132in	132in
Trailer Width	86in	92in	96in
Weight	1,250lb	1,400lb	1,450lb
Tires	ST 235/80 R 16 (14 ply) (110 PSI)	ST 235/80 R 16 (14 ply) (110 PSI)	235 75R x 17.5 (123 PSI)

Accessories:

- Hydraulic Power Rewind
- Gas Powered Hydraulic Power Pack
- Electric Hydraulic Pump

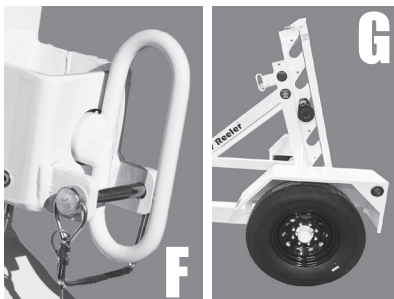
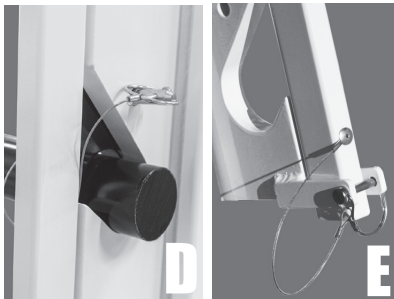
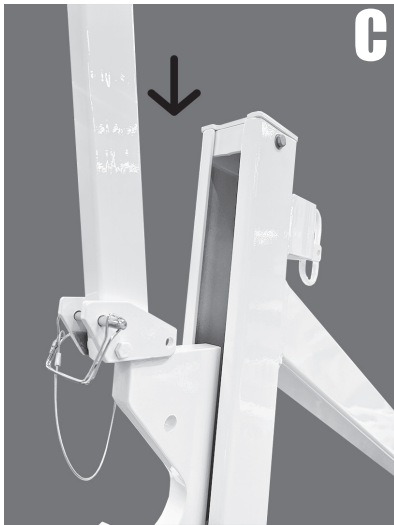
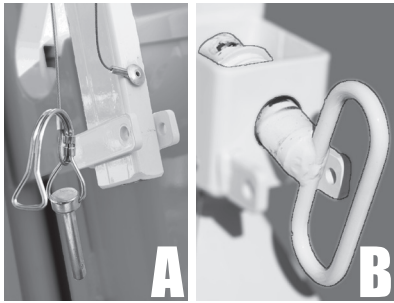
Custom Features:

- Chock Blocks (with or w/o mount)
- Mud Flaps
- Spare Tire (with or w/o mount)

At Slabach Enterprises we continually strive to manufacture the most reliable and highest quality products for our customers. Therefore, we reserve the right to improve or modify our products from time to time without incurring any obligation to change, improve or modify any previously purchased manufactured products

OPERATING INSTRUCTIONS

LOADING:



Prior to loading, the trailer must be parked on stable, flat ground and attached to the tow vehicle at all times. Attach the hitch, safety chains, breakaway kit and electrical connector to the towing vehicle. Remove the PTO pins (A) which secure the safety bars. Raise the safety bars and secure using the PTO pins (C). Using the hydraulic manual pump or hydraulic electric pump, raise the slide lifts until they reach their maximum allowable height (fully raised position), this will relieve pressure off the transport lock pins. Once pressure is off the transport lock pins, remove the PTO pins that secure the transport lock pins and pull back on the transport lock pins to unlock. Cock both pins against the frame of the slide lift (B). Slides should now lower by turning the release valve on the hydraulic manual pump no more than one full turn (if electric pump, use down button). When the slide lifts have lowered fully (C), close the release valve. Loosen the bolts on both spool bar clamps using a 3/4" wrench. Remove the left and right spool bar pins from the spool bar (D). Remove the end collar and the spool bar clamp closest to the open end of the spool bar (leave the other spool bar clamp on the spool bar). Remove the spool bar from the trailer and insert the open end of the spool bar through the spool hole. Center the spool on the spool bar so an equal amount of spool bar is visible on each side of the spool. Once spool is centered, position one spool bar clamp against each side of the spool and tighten the bolts on both clamps to secure. Place the spool into the opening of the trailer and position the spool so the spool bar can fit into the highest matching lifting slots on the slide lift. With spool and bar in position on the slide lift, lower the safety bars by removing the PTO pins and secure with the PTO pins (E).

Using the hydraulic pump, raise the spool bar/slides until they reach their maximum allowable height. Uncock the left and right transport lock pins from the frame and lock both into the slide lift. With both transport lock pins securely locked into the slide lift and PTO pins secured (F), slowly open the hydraulic release valve (down arrow button on electric pump). This will allow the slide lifts to lower and transfer the weight of the spool from the hydraulic cylinders to the transport lock pins (G). Once the weight has been transferred to the transport lock pins, close the release valve on the hand pump. With slide lifts locked into position, visually check to ensure the spool has adequate ground clearance prior to movement of the tow vehicle.

UNLOADING:

Prior to unloading, the trailer must be parked on stable, flat ground and attached to the tow vehicle at all times. Remove the PTO pins (A) which secure the safety bars. Raise the safety bars and secure using the PTO pins (C). Using the hydraulic manual/electric pump, raise the slide lifts to their maximum allowable height. Once pressure is off the transport lock pins, remove the PTO pins that secure the transport lock pins and pull back on the transport lock pins to unlock. Cock both pins against the frame of the slide lift. Lower the slide lifts by turning the release valve on the hydraulic manual pump no more than one full turn (if electric pump, use down button). When the slide lifts have lowered fully, close the release valve. Remove the left and right spool bar pins from the spool bar. Remove spool from trailer. Once spool is safely placed to the ground, remove the end collar and loosen the bolts on both spool bar clamps. Remove spool bar clamp closest to the open end of spool bar (leave the other spool bar clamp on the spool bar). Remove the spool bar from the spool.

Scan QR code to watch operation instructions video



Video



Wheeler Reeler

OPERATING INSTRUCTIONS

1. When not under load, the slide lifts have a tendency (at times) to lower slower than normal when equipped with the Manual Hydraulic System. If this should occur, open the release valve on the hand pump (no more than 1 full turn) and apply downward pressure to the slide lifts to increase the lowering speed.
2. To remove or replace the transport lock pins, make sure the slide lifts are raised to their maximum allowable height.
3. For optimal trailer performance and safety, spools should be loaded into the uppermost slide lift position when the slide lifts are fully lowered.
4. Check the hydraulic fluid level monthly and perform routine maintenance by changing the fluid annually. Maintaining the proper fluid level provides for optimal hydraulic performance and decreases the chance of air getting into the system (See Servicing pg.5).

CAUTIONS

1. Trailer must ALWAYS be securely attached to the tow vehicle during loading, unloading, operation and transportation. Trailer should NEVER be loaded or unloaded on an incline.
2. ALWAYS keep the slide lifts in their fully raised position with the transport lock pins locked, PTO pins secured and weight of the spool on the transport lock pins when the trailer is under load.
3. NEVER move, transport or allow the trailer to sit idle for any length of time under load with the transport lock pins unlocked. This will prevent wear on the hydraulic system from the weight of the bar or spool being solely supported by the hydraulic system.
4. When under load, ALWAYS keep the spool centered on the spool bar with the spool bar collars secure and tight against each side of the spool.
5. NEVER move the trailer until both safety bars are lowered and securely fastened with the PTO pins.
6. The hitch should be adjusted so the frame of the trailer is parallel to the ground when connected to the tow vehicle.
7. To monitor and control spool speed and rotation, ALWAYS keep an attendant with the trailer during the de-spooling process.
8. When hitching up trailer prior to transport, ALWAYS connect the hitch, safety chains, electric connector and breakaway kit to the tow vehicle. Check the trailer tires for proper air pressure, the lug and hitch bolts for tightness and the electrical system (lights and brakes) for proper operation.
9. To avoid possible injury, NEVER LIFT OR MOVE the tongue of the trailer by hand.
10. NEVER turn the hydraulic pump release valve more than one full rotation when releasing hydraulic pressure & lowering the slides.

STATEMENT OF WARRANTY

1. Slabach Enterprises warrants to the original purchaser of Slabach Enterprises newly manufactured equipment, that such equipment to be free from defects in materials and workmanship, when properly maintained, and under normal use and service, which means loading, unloading and transportation of uniformly distributed legal loads that do not exceed the gross vehicle weight rating (GVWR) set forth on the vehicle identification plate and in a manner in which does not subject the trailer to strains and impacts greater than are imposed by normal use as prescribed in this manual and the trailers specifications for a period of one year (12 months) commencing with date of delivery to the original purchaser.
2. The obligation of Slabach Enterprises under this warranty is expressly limited, at our option, to replacement or repair at Slabach Enterprises, located at 215 S 14th St., Kalona, Iowa 52247 or at an approved service facility designated by Slabach Enterprises of such part or parts as inspection shall disclose to have been defective. This warranty does not apply to defects or damage caused by accident, abuse, negligence or misuse of the trailer or its components (including failure to provide reasonable and necessary maintenance) while in the possession of the original purchaser.
3. Slabach Enterprises shall not be liable for consequential damages of any kind, including, but not limited to, consequential labor costs or transportation charges in connection with replacement or repair of defective parts.
4. Slabach Enterprises makes no warranty with respect to tires and trade accessories. They are subject to the warranties of their original manufacturers.
5. Any implied or statutory warranties, including any warranty of merchantability or fitness for a particular purpose, are expressly limited to the duration of this written warranty. Slabach Enterprises makes no express warranty, nor is anyone authorized to make any on behalf of Slabach Enterprises.



Wheeler Reeler

ACCESSORY COMPONENTS SUBJECT TO THE WARRANTY TERMS OF ORIGINAL MANUFACTURER

WARRANTY PROCEDURES FOR HYDRAULIC COMPONENTS:

As stated in the warranty, accessory components, i.e. hydraulic pumps and valves, are subject to the warranty terms of their manufacturers. If after following the recommended maintenance parameters listed under "Maintenance Schedule", the hydraulic pump and/or valves do not operate correctly, Slabach Enterprises offers the following services to WHEELER REELER owners:

1. Contact Slabach Enterprises for instructions before returning any defective parts. Defective parts which are returned must have the transportation prepaid to Slabach Enterprises, 215 14th St., Kalona, Iowa 52247-0814.
2. Slabach Enterprises will send a replacement for part if required. The customer will be charged for the transportation and cost of the replacement part, subject to the original manufacturer's determination regarding the warranty coverage of the defective part.
3. If the manufacturer makes any allowance or credit under the terms of the warranty, this allowance will be credited to the customer.

Maintenance Schedule

Component	Weekly	Monthly	Annually
Check Lug Nuts	X		
Model 45, I-60: 125 ftp			
Model I-85: 275 ftp			
Inspect Tire		X	
Pump Inspection		X	
Fluid Level		X	
Apply Anti-Sieze to Release Valve Threads		X	
Replace ATF Dextron II Automatic Fluid			X
Inspect Bearings/Hubs			X
Inspect Brakes			X
Inspect Frame			X

NOTE: If cylinders bounce when lifting or lowering air is likely trapped within the Hydraulic system. Contact Slabach Enterprises for recommended method of removing air from the system.

Pre Trip Inspection

It is highly recommended that operators perform a pre trip inspection prior to use in accordance to company & federal guidances. Examples of what to check are but not limited to: tires, lights, safety chain, break away kit, etc

Item	Description	QTY.	PART #	Item	Description	QTY.	PART #
1	Frame (1)	1	1110	35	#6 Lock Washer	2	6310
2	Electric Connector:	1		36	Machine Screw 6 - 32 X 3/4	2	6320
	6-Hole		7050	37	License Plate Light	1	6330
	7-Hole (Round)		7051	38	Tail Light	4	6400
	7-Hole Bargman/RV (Flat)		7052	39	Rubber Grommet 4"	4	6410
3	Hitch:	1		40	Fender	2	6210
	Pintle Eye		2040	41	Hitch Pin w/ Lanyard	2	3200
	2 5/16 Ball"		2050	42	Spool Bar (4)	1	3210
4	Hitch Mounting Bolts 2 1/2 x 5/8 Gr. 8	4	2060	43	Spool Collar Bolt 1 1/4 x 1/2 Gr. 8	2	3230
5	Lock Washer 5/8 Gr. 8	4	2070	44	Spool Bar Collar	2	3220
6	Nut 5/8 Gr. 8	4	2080	45	Safety Bar Collar	1	3240
7	Bolt 2 1/2 x 1/2 Gr. 8	2	2100	46	Slide Lift (Left Side)	4	3400
8	Toplock Nut 1/2 Gr. 8	2	2110	47	Lg Sq PTO Pin	2	3410
9	Safety Chain	2	2020	48	Cotter Pin 1 1/2 x 1/4	2	3180
10	Stand Jack	1	2010	49	Cylinder Pin	4	3160
11	Flange Bolt 5/16	2	5030	50	Hydraulic Lift Cylinder	2	3130
12	Flow Divider (1)	1	5010	51	Slide Lift (Right Side)	1	3140
13	Manual Hyd. Pump Handle	1	5100	52	Sm PTO Pin	2	3190
14	Hydraulic Pump:	1		53	Slide Safety Bar	2	5150
	Manual (2)		5110	54	Toplock Nut 5/16	2	5140
	Electric (3)		5120	55	Flat Washer 5/16	2	5210
15	Locking Nut 5/16 Gr. 5	4	5040	56	Upright Cap	2	3140
16	Mounting Bolt 1 x 5/16	4	5050	57	Bolt 5/16 x Gr. 8	2	3130
17	Rubber Grommet	7	6100	58	Transport Lock Assembly	2	3320
18	Amber Light	2	6110	59	Break Away Battery	1	7130
19	Rear Hydraulic Hose	2	5200	60	Battery Box	1	7140
20	Spindle	2	4010	61	Break Away Switch	1	7120
21	Break Assembly	2	4410	62	Junction Box	1	7110
22	Oil Seal (seal # by model)	2	4030				
23	Inner Bearing (bearing # by model)	2	4040				
24	Hub Assembly	2	4420				
25	Outer Bearing	2	4630				
26	Inner Washer	2	4660				
27	Inner Nut	2	4670				
28	Outer Washer	2	4680				
29	Outer Nut	2	4690				
30	Dust Cap	2	4650				
31	Tire (Tire # by model)	2	4430				
32	Lug Nut (Nut # by model)	16	4610				
33	Red Light	5	6120				
34	Machine Nut 6 - 32	2	6300				

NOTE: PLEASE SPECIFY TRAILER ORIGIN YEAR, TRAILER MODEL NO. & SERIAL NO. WHEN ORDERING ALL PARTS.

(1) See page 10 for detail of parts

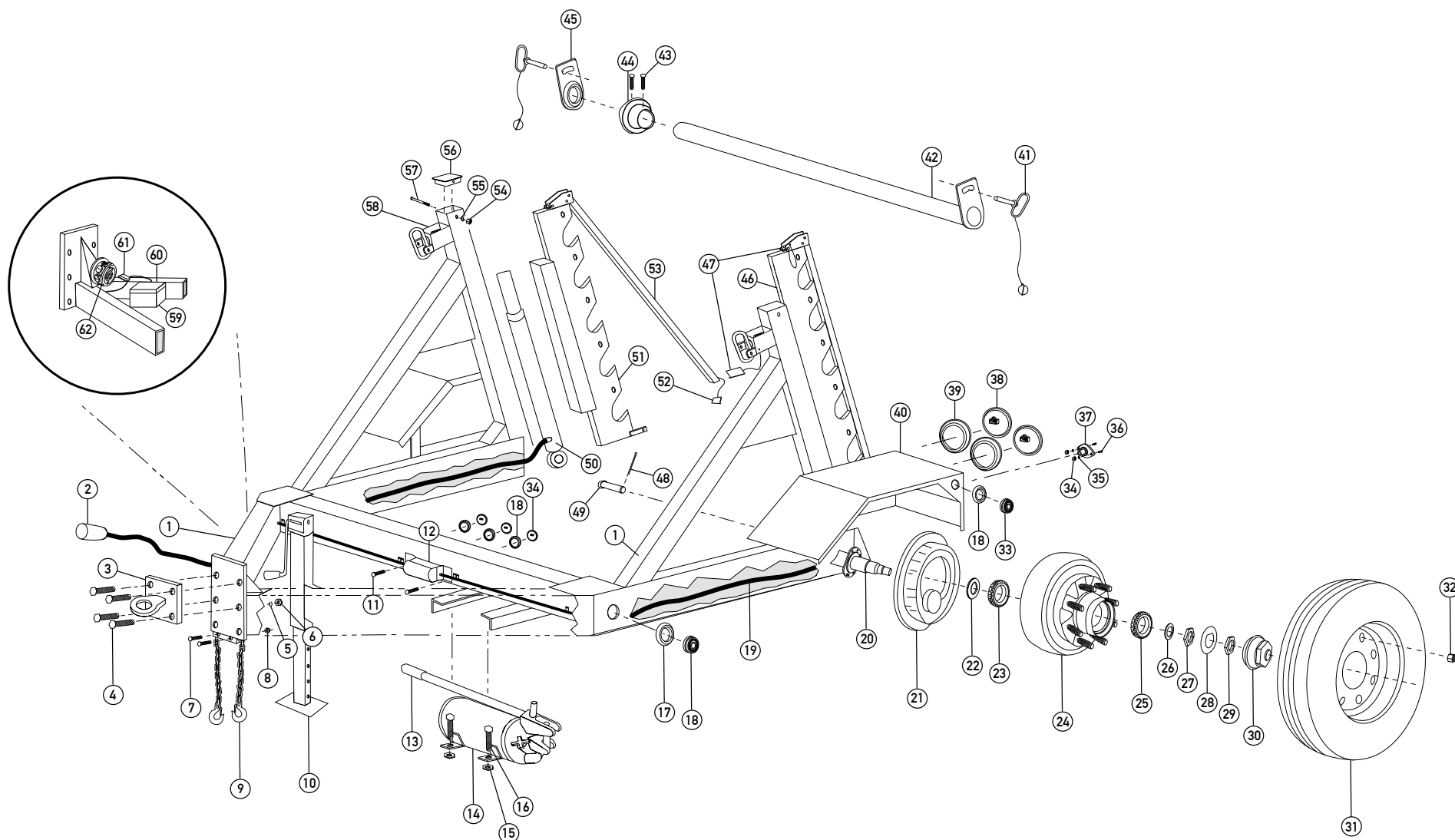
(2) See page 8 for detail of parts

(3) See page 9 for detail of parts

(4) When ordering spool bar, specify exact length of bar if possible

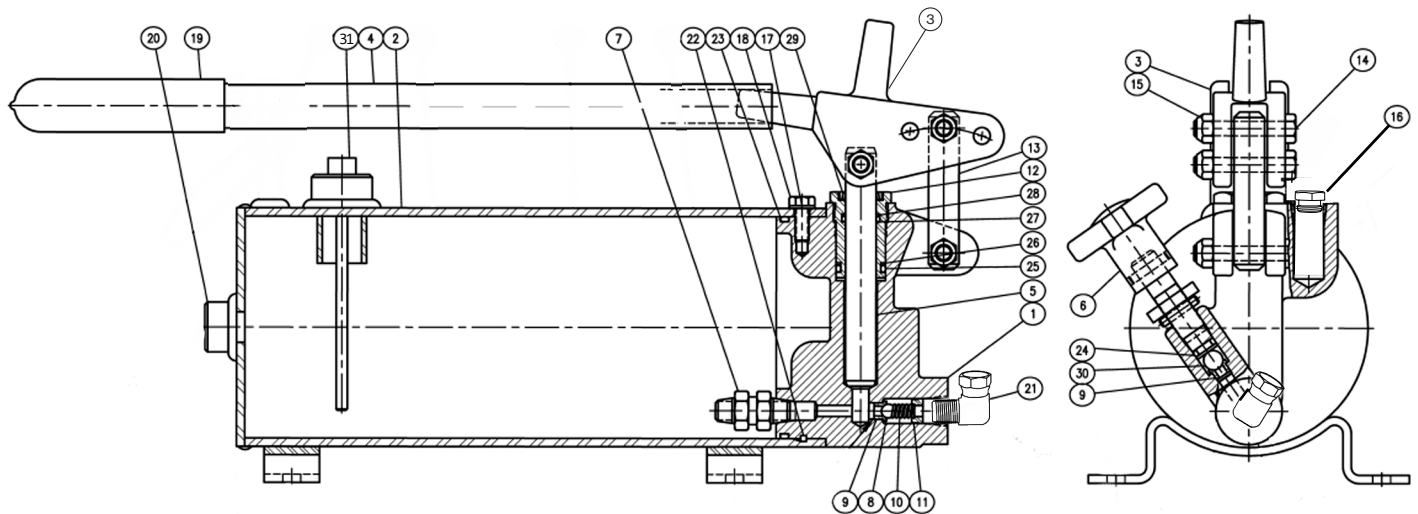


Wheeler Reeler



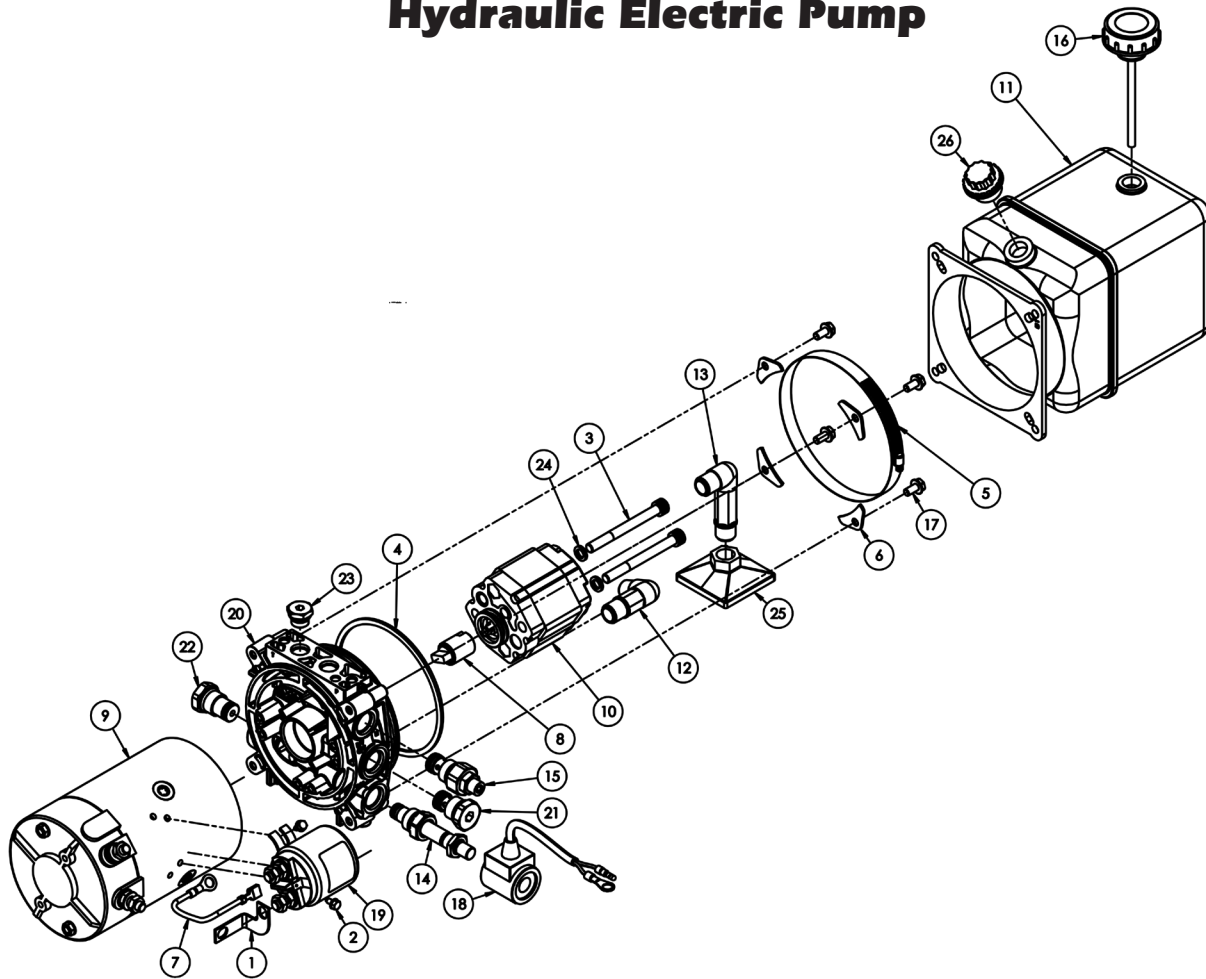
Model I-85

Hydraulic Manual Pump



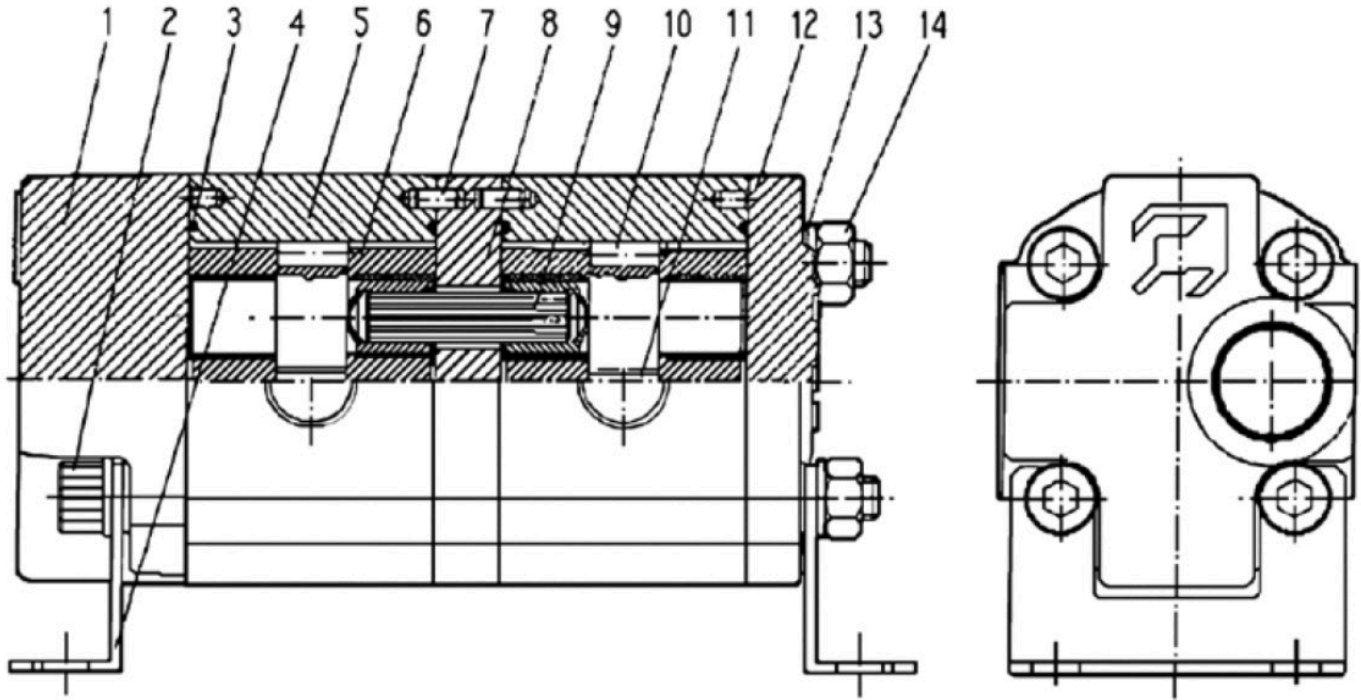
ITEM	DESCRIPTION	QTY.	PART #
1	HEAD	1	090000121
2	BUTT & TUBE ASS'Y	1	062100116
3	YOKE	1	090000002
4	HANDLE	1	050400123
5	PISTON	1	010300003
6	RELEASE VALVE ASS'Y	1	180901514
7	CHECK VALVE	1	270002006
8	STEEL BALL (5/16)	1	230009001
9	VALVE SEAT	2	200100013
10	OUTLET SPRING	1	230008003
11	PLUG	1	200300003
12	GLAND	1	080600005
13	LINKAGE PIN	1	190300026
14	HX. HD. CAP SCREW	3	170002089
15	LOCKNUT	3	220000203
16	CAP-BREATHER	1	200013922
17	LOCKWASHER	1	220001005
18	HX HD CAP SCREW	1	170002005
19	HANDLE GRIP	1	230010331
20	PIPE PLUG- 1/2 NPTF	1	200018003
21	90 DEGREE ELBOW PIPE SWIVEL	1	1013057
22	SQ. RETAINING RING	1	230007501
23	O-RING	1	240000248
24	O-RING	1	240000110
25	O-RING	1	240000212
26	TEFLON BU-WASHER	1	240019212
27	O-RING	1	240000115
28	BU-WASHER	1	240005115
29	WIPER	1	250002115
30	STEEL BALL- 7/16 DIA	1	230009003
31	DIP STICK	1	180901068

Hydraulic Electric Pump



ITEM	DESCRIPTION	QTY.	PART #	ITEM	DESCRIPTION	QTY.	PART #
1	COPPER BRACKET 1.6- 2.2 KW	1	1052056	18	10VDC DUAL WIRE TEK COIL	1	1134314
2	MOUNT SCREW START SOL	2	1052057	19	12 VDC CONT. DUTY START	1	1143811
3	PUMP BOLT GO21,GO23,GO27	2	1052058	20	#6 ORB PORTED	1	1183398
4	X SERIES TANK O-RING	1	1052072	21	CV08-2BN CHECK VALVE	1	1183605
5	PLASTIC TANK STEEL BAND	1	1052099	22	CAVITY BLOCKING PLUG	1	1183676
6	PLASTIC TANK STEEL PLATE	4	1052101	23	HYDRO-TEK PORT PLUG	1	1184402
7	GROUND WIRE START SOL	1	1052102	24	HYDRO-TEK GO SERIES PUMP	2	1184404
8	COUPLING FOR XA	1	1052159	25	HYDRO-TEK STAND. FILTER	1	1184407
9	2 H.P. 12VDC 2500RPM MOTOR	1	1052167	26	POLY PLUG	1	PF 3-4 POLY
10	GO23N- .140CID 2.3CC PUMP	1	1052243				
11	.75 GAL. SQ. POLY RESERVOIR	1	1052384				
12	SUCTION PIPE PLASTIC ELBOW	1	1052442				
13	SUCTION PIPE PLASTIC ELBOW	1	1052445				
14	CARTRIDGE VALVE	1	1052453				
15	CAVITY MAIN HIGH PRESSURE	1	1068049				
16	BREATHER PF 3/4"	1	1073344				
17	MFBZ-6-16 TANK BOLT	4	1091095				

Flow Divider



ITEM	DESCRIPTION	QTY.	PART #
1	REAR COVER PLD 10 POB/**	1	21670310
2	SCREW TCEI M 8X145 5931-12.9	4	34850045
3	O-RING SEAL 2-033 90/SH.A (50.52X1.78)	4	38622000
4	BRACKET PLD 10-FS SLB	2	45976025
5	BODY PLD 10.4-L**/OA (SLB)	2	17100547
6	THRUST PLATE PL10 R WITHOUT SEAL	4	23700024
7	DOWEL PIN MM.3.5x8	4	49250000
8	FLANGE PL 10/10-V7 FS PRESS	1	43318926
9	CONNECTING SHAFT 10/10-FS	1	44294540
10	DRIVE GEAR PL 10.4/111-FS	2	27718490
11	DRIVEN GERA PL10.4	2	27718506
12	REAR COVER PL 10 S/D	1	21670000
13	WASHER 8-(8.4x15x1.5)-HB=350	12	37583600
14	NUT M 8 UNI 5588-A-8G	4	36730000



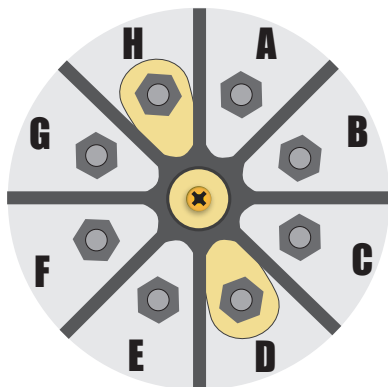
This exploded view diagram illustrates the assembly of the EASYLIFT system. The components are numbered as follows:

- Motor and Drive Components:** 1 (Motor), 2 (Wiring), 3 (Switch), 4 (Motor Housing), 5 (Screw).
- Main Frame and Base:** 6 (Base Plate), 7 (Bracket), 8 (Screw), 9 (Pulley), 10 (Bracket), 11 (Screw), 12 (Screw), 13 (Bracket), 14 (Bracket).
- Lifting Arm and Joints:** 15 (Pin), 16 (Pin), 17 (Pin), 18 (Pin), 19 (Pin), 20 (Pin), 21 (Pin), 22 (Pin), 23 (Pin), 24 (Pin), 25 (Pin).
- Control Cable:** 26 (Cable), 27 (Connector).

11

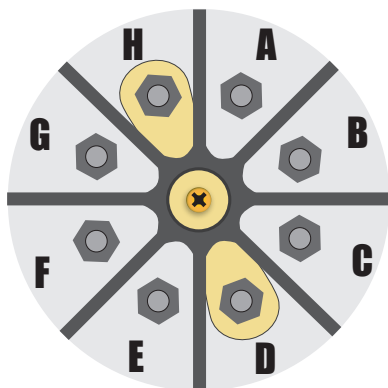
ELECTRICAL WIRING DIAGRAM

Bargman / RV Plug to Terminal Box



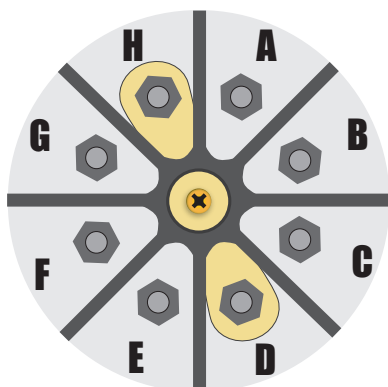
Terminal Position	Trailer Wire Color	Pig Tail Wire Color	Function
A	Blue	White	Ground
B	Empty	Empty	
C	Black / Black	Brown	Marker / Tail Light
D	White / White / Black (w/ White Tape)	Empty	Brakes
E	Empty	Empty	
F	Red / Green	Green	Right Turn
G	Red / Green	Yellow	Left Turn
H	Empty	Black	Brakes / 12v

7 - Hole Plug to Terminal Box



Terminal Position	Trailer Wire Color	Pig Tail Wire Color	Function
A	Blue	White	Ground
B	Empty	Empty	
C	Black / Black	Brown	Marker / Tail Light
D	White / White / Black (w/ White Tape)	Empty	Brakes
E	Green	Green	Right Turn
F	Red / Red	Red	Brake Light
G	Green	Yellow	Left Turn
H	Empty	Black	Brakes / 12v

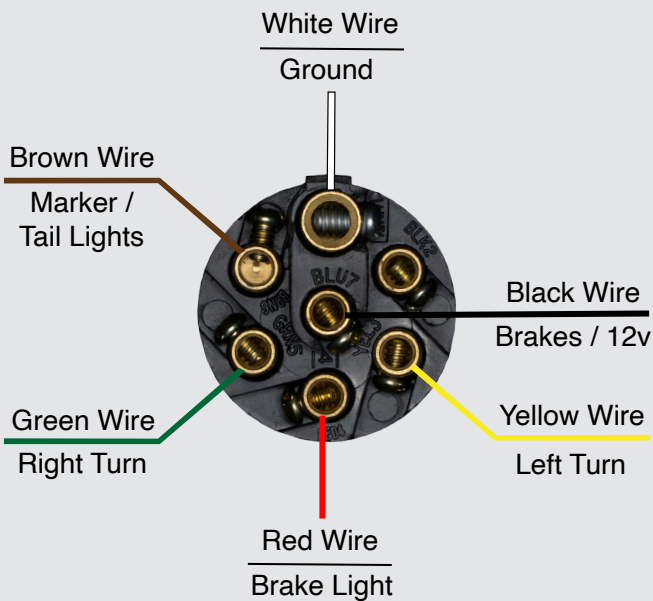
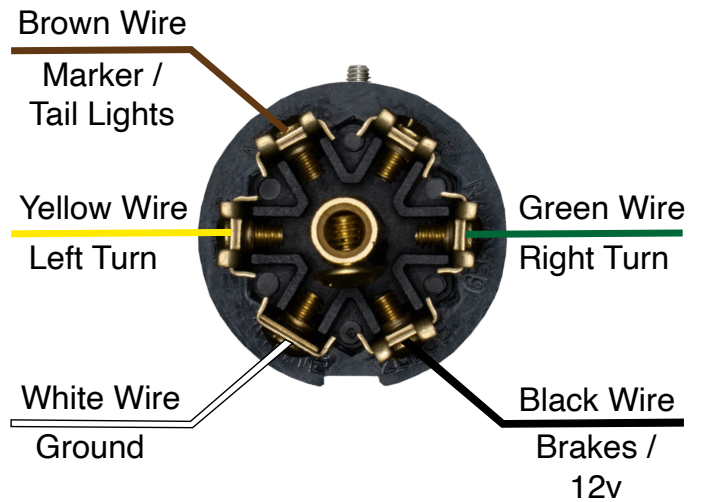
6 - Hole Plug to Terminal Box



Terminal Position	Trailer Wire Color	Pig Tail Wire Color	Function
A	Blue	White	Ground
B	Empty	Empty	
C	Black / Black	Brown	Marker / Tail Light
D	White / White / Black (w/ White Tape)	Empty	Brakes
E	Empty	Empty	
F	Red / Green	Green	Right Turn
G	Red / Green	Yellow	Left Turn
H	Empty	Black	Brakes / 12v

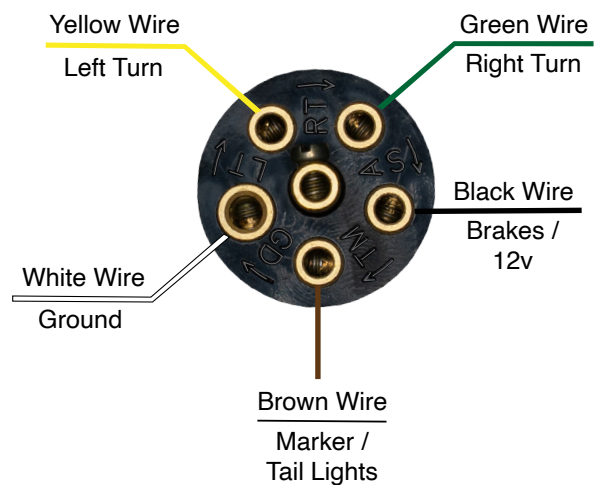
ELECTRICAL WIRING DIAGRAM

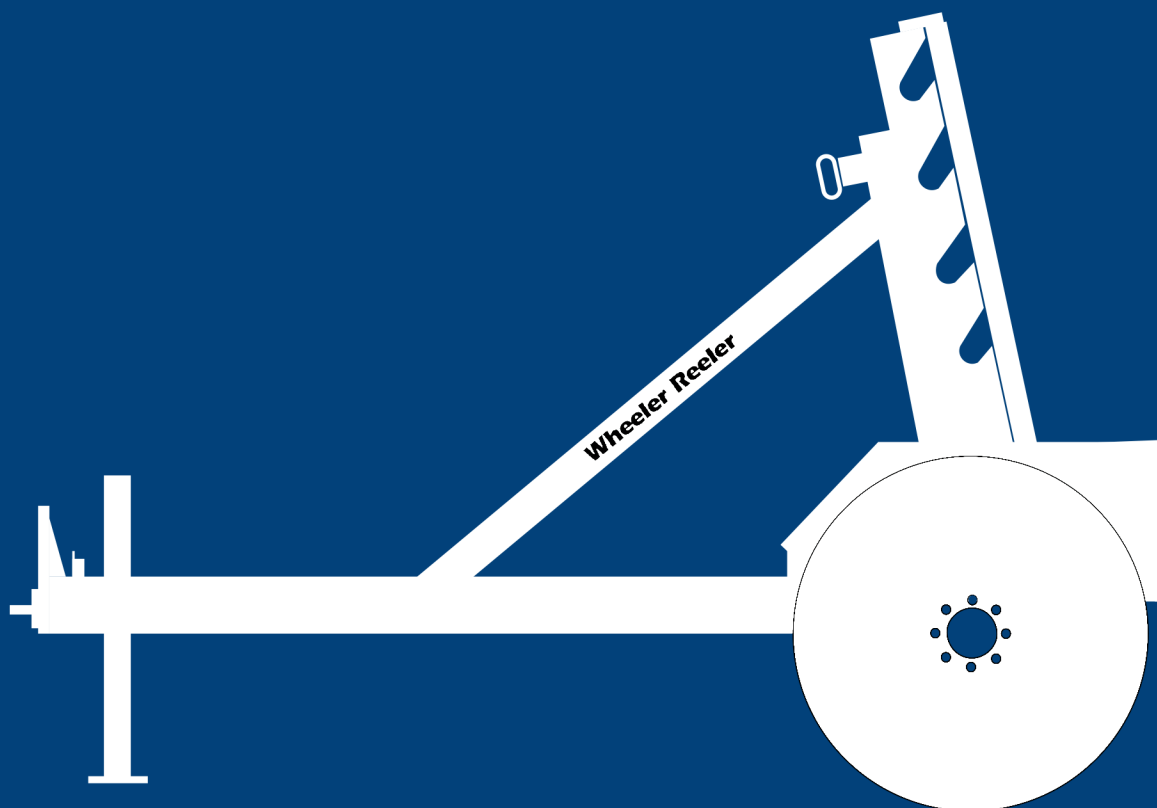
Bargman / RV Electric Plug (flat)



7 - Hole Electric Plug (round)

6 - Hole Electric Plug





Wheeler Reeler

**P.O Box 814
Kalona, Iowa 52247-0814
office@slabach.com
www.slabach.com**